

# Membership and Loyalty Cards

All cards are 3 3/8" x 2 1/8"



## Material Spot Color

No. 720 .030" Matte Plastic  
No. 820 .020" Gloss Plastic

## 4-Color Process

No. 921 .018" Gloss Plastic  
No. 3320 .012" Overlaminated Tag Stock

## Production Time

Approximately 5 working days.  
Add 2 working days if numbering or barcodes are required.

## Color Match

Add \$49.00(E) per color to be matched. Not available on 4-color process.

## Copy/Color Changes

Add \$46.00(E) per each change.  
See Appendix B for additional information.

## Numbering/Barcodes

Black numbering is available in sizes up to 1" tall. The most common choices include: 7/32", 3/8", 1/2", 3/4" and 1". Please specify size and sequence when ordering. Code 39 barcodes are available. Prices shown are for one location on one side only.

## Numbering Sequence Change

Add \$11.00(G) per each change.

## Art Preparation

There are no art charges for orders with approved digital art. Add \$51.00(C) for artwork that does not meet specifications.

See Appendix A for complete art information.

## Spot Color Membership Cards

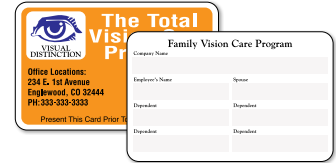


Optional "Write-On" panels are priced as one additional color.



**No. 720**  
Matte white plastic approx. .030" thick.

**No. 820**  
Gloss white plastic approx. .020" thick. (shown with optional numbering)



Use **Back Imprint** to record important information, add valuable coupons, or include signature panels.

Spot Color Membership Cards			250	500	1000	1500	2500	5000	10,000
<b>No. 720</b>	Matte Plastic	One Color	\$ 1.89	1.17	.756	.644	.404	.283	.182
<b>No. 820</b>	Gloss Plastic	One Color	\$ 1.90	1.20	.814	.683	.452	.363	.228
Each Add'l Color Either Side			\$ 1.07	.615	.344	.235	.144	.085	.077
Numbering/Barcodes			\$ .320	.205	.174	.165	.144	.121	Contact

Please identify repeat orders. Prices subject to change. MSRP shown. 4A-B-C-D

## 4-Color Process Membership Cards



**No. 921**  
Gloss white plastic approx. .018" thick.

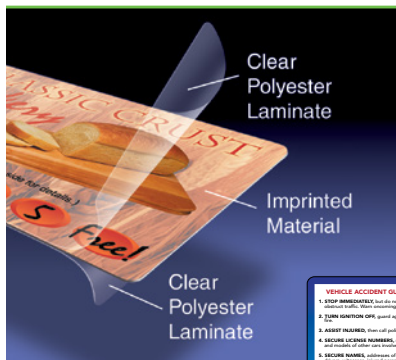
"Write-On" panel available at no additional charge.



4CP Membership Cards		125	250	500	1000	1500	2500
<b>No. 921</b>	1 Side	\$ 5.13	2.98	1.74	1.10	.809	.585
	2 Sides	\$ 5.49	3.31	1.92	1.21	.911	.657
Numbering/Barcodes		\$ .521	.320	.205	.174	.165	.131

Please identify repeat orders. Prices subject to change. MSRP shown. 5A-B

## 4-Color Process Loyalty Cards



Both sides are overlaminated for an attractive and durable finish.



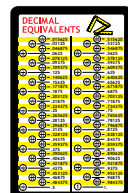
**No. 3320**



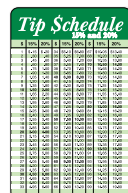
Popular stock **Back Imprint** designs can be added to your order at no extra charge.



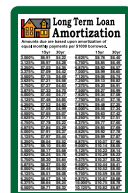
**No. 3320A**  
Accident Reminders



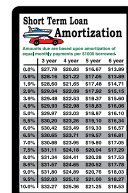
**No. 3320C**  
Decimal Equivalents



**No. 3320D**  
Tip Schedule



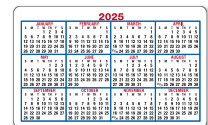
**No. 3320E**  
Long Term Loan Am.



**No. 3320F**  
Short Term Loan Am.



**No. 3320G**  
Special Dates



**No. 3320B**  
Calendar (Specify Year)

**Back Imprint** included in the prices shown. Supply your own artwork or choose from our stock designs as illustrated. Specify stock back copy by item number when ordering (Example: **No. 3320A** Accident Reminders).

4CP Loyalty Cards		50	125	250	500	1000	1500	2500	5000
<b>No. 3320</b>	2 Sides	\$ 4.13	1.88	1.04	.559	.417	.372	.264	.178
Numbering/Barcodes		\$ .906	.521	.320	.205	.174	.165	.131	.111

Please identify repeat orders. Prices subject to change. MSRP shown. 6A-B-C